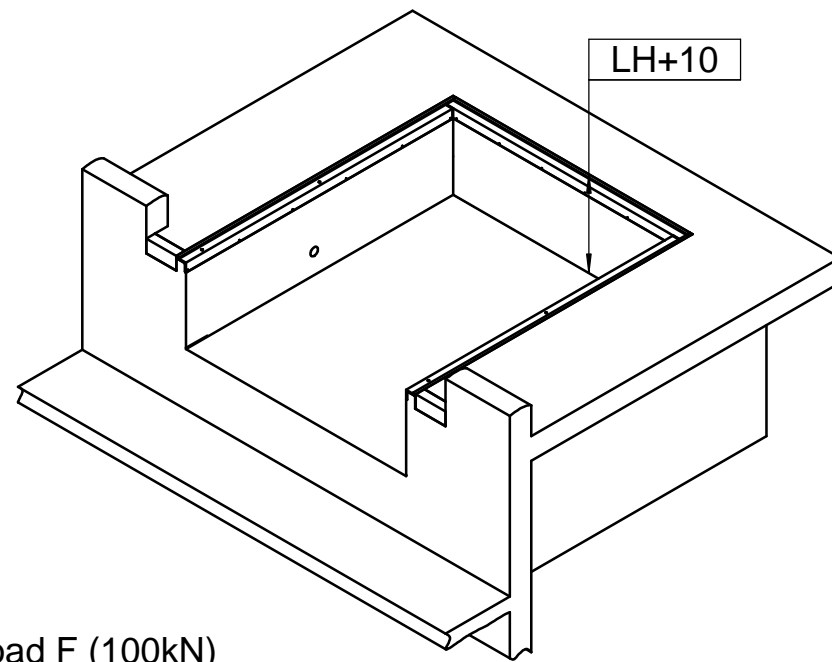
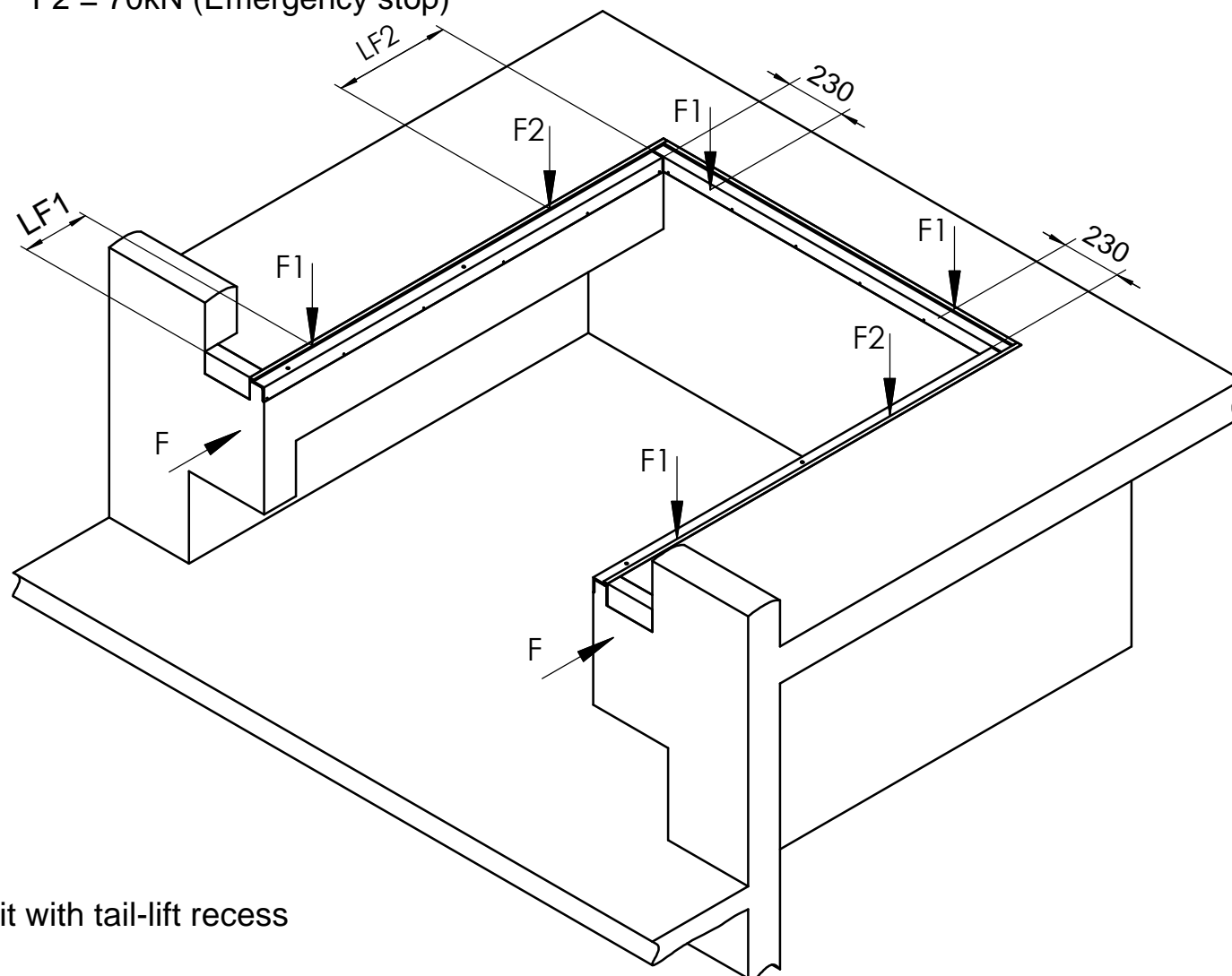


Pit without tail-lift recess:



Loads: F The horizontal impact load F (100kN) must be absorbed by the structure

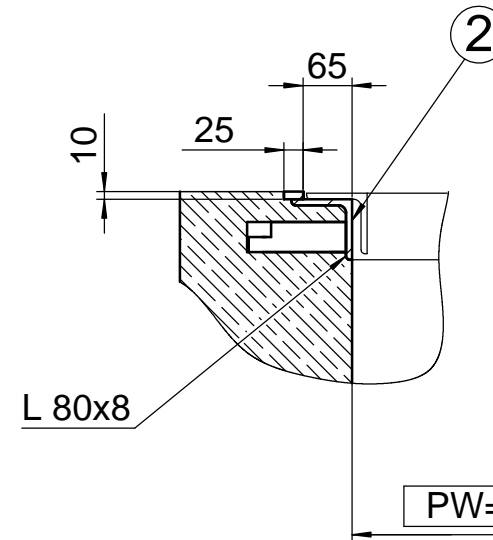
F1 = 95kN (Cross traffic position)
F2 = 70kN (Emergency stop)



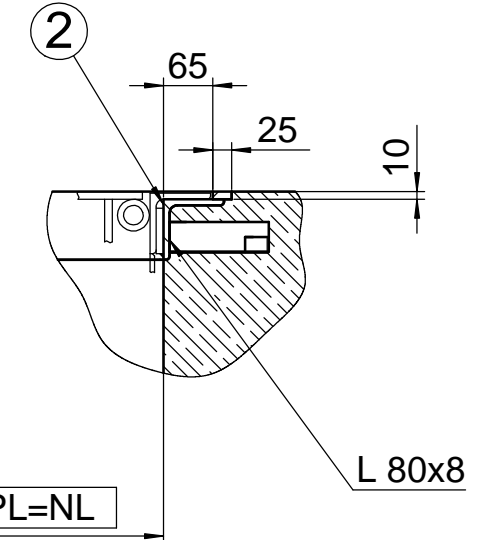
Pit with tail-lift recess

Remark: Pre-installed frame welded to concrete-reinforcement

B-B (1 : 10)
side



C-C (1 : 10)
rear



This Drawing consists of 2 sheets!

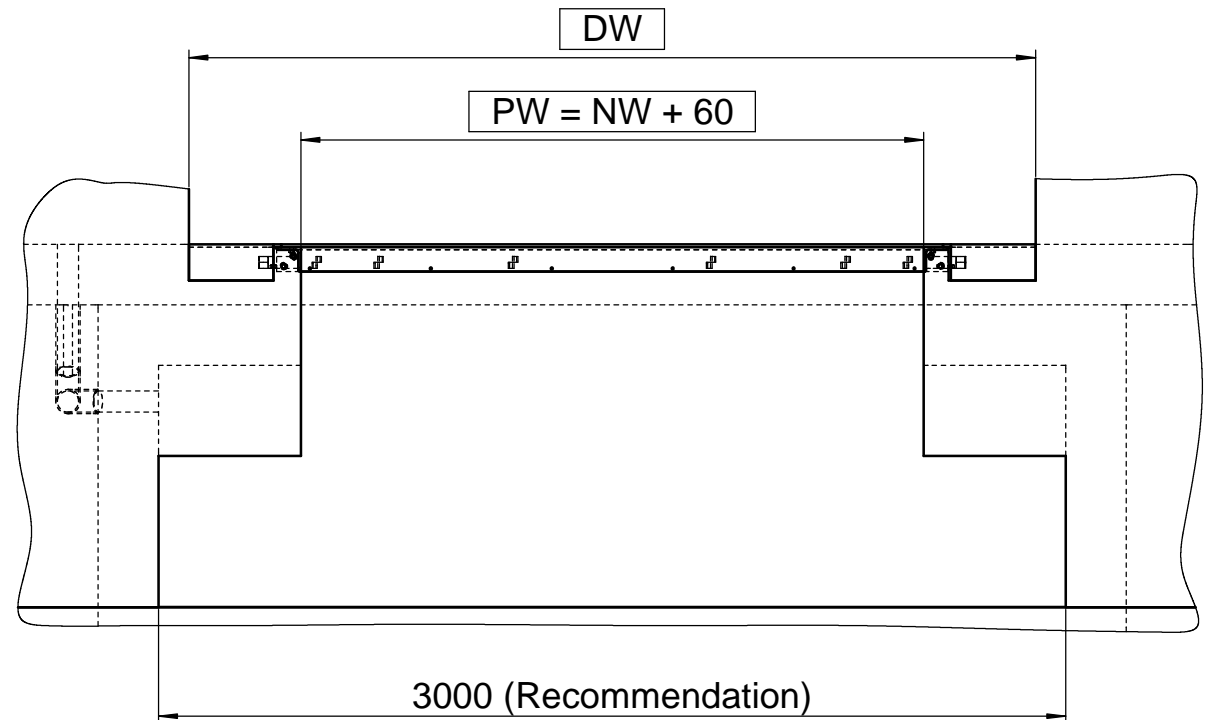
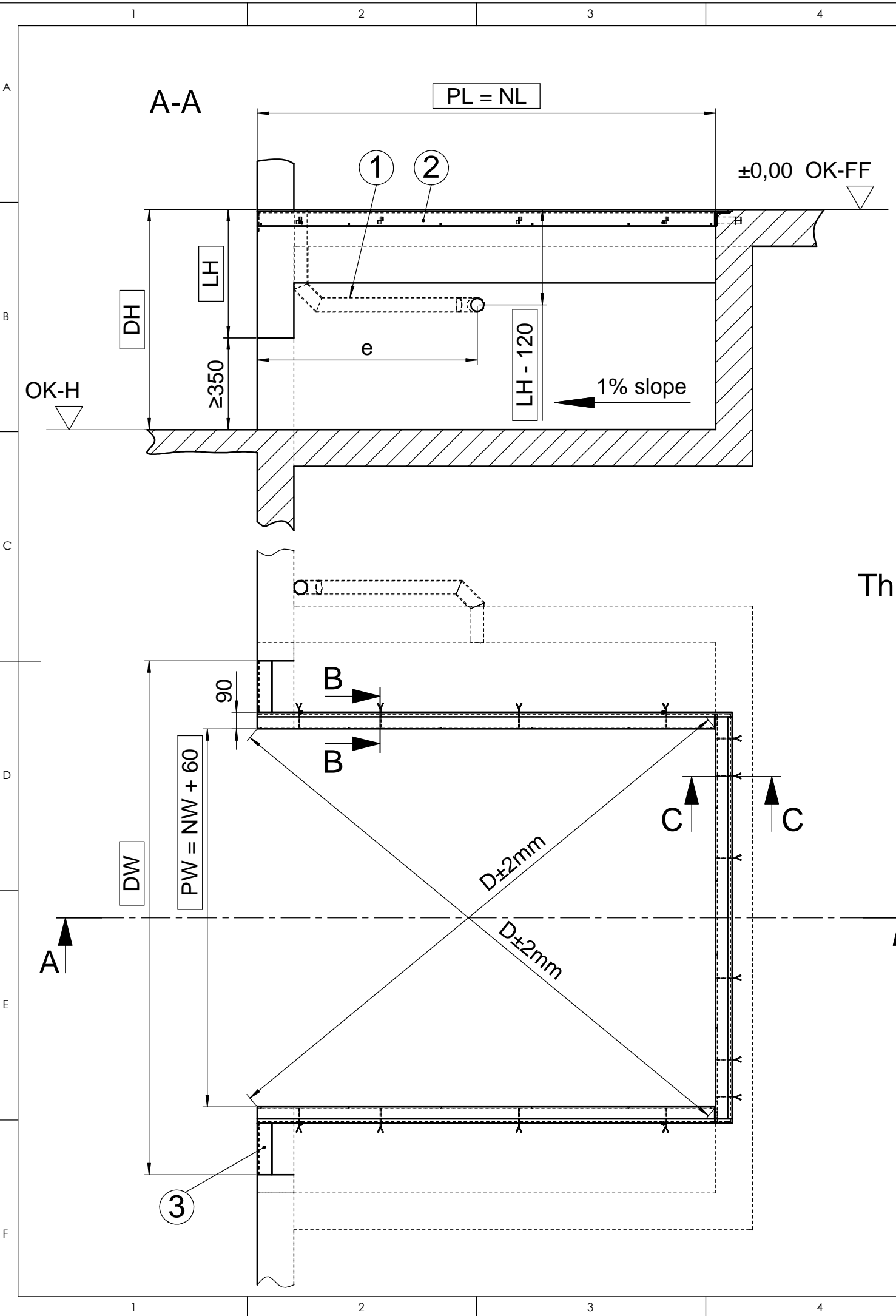
NL	LF1	LF2
2000	100	700
2500	100	800
3000	100	1000

1. Conduit for wiring internal diameter min. 70mm, angles < 45° (by others)
2. Pre-install frame
3. Steel-profile, e.g. angle 120x80x10 DIN 1029 (by others)

Attention!

- Do not deviate from the measurements given
- The pit walls have to be perpendicular
- The corners of the pit must be squared (diagonals must be equal)
- The preparation of the pit by others

It is forbidden by law to copy, duplicate this document, to transmit it to any third party or to misuse it in any way. The drawing remains our property and is to be returned immediately after use.		General Tolerance: ISO 2768-mK	Debur and break sharp edges	Scale: 1:25	Revision: 00
Drawn	Burdan	Date	08.02.2017	Semifinished product:	
Checked		Title: Pit-drawing "Method BX" for L350			
Quality-A.		Drawing Number: 040-NF-PIT-137433			
		Last Saved: burdan 08.02.2017 14:37:07		A3	
				Sheet 1 of 2	
		Docking Solution und Service GmbH Springrad 4, D-30419 Hannover		Material: S235JRG2	



Check the minimum depth for tail-lift
Recommendation = 2500mm

This Drawing consists of 2 sheets

NW	PW
2000	2060
2200	2260
2250	2310
2400	2460

LH	Leveller Height
NL	Nominal Length
PW	Pit Width
PL	Pit Length
OK-H	Yard Level
OK-FF	Finished Floor Level
DW	Door Width
DH	Dock Height

NL	2000	2000	2500	2500	3000	3000
LH	600	700	600	700	600	700
PL	2000	2000	2500	2500	3000	3000
e	1650	1650	2000	2000	2320	2320

It is forbidden by law to copy, duplicate this document, to transmit it to any third party or to misuse it in any way. The drawing remains our property and is to be returned immediately after use.		General Tolerance: ISO 2768-mK	Debur and break sharp edges		Scale: 1:25	Revision: 00								
<table border="1"> <thead> <tr> <th>Name</th> <th>Date</th> </tr> </thead> <tbody> <tr> <td>Drawn Burdan</td> <td>08.02.2017</td> </tr> <tr> <td>Checked</td> <td></td> </tr> <tr> <td>Quality-A.</td> <td></td> </tr> </tbody> </table>		Name	Date	Drawn Burdan	08.02.2017	Checked		Quality-A.		Last Saved: burdan 08.02.2017 14:37:07		Title: Pit-drawing "Method BX" for L350		
Name	Date													
Drawn Burdan	08.02.2017													
Checked														
Quality-A.														
		 Docking Solution und Service GmbH Springrad 4, D-30419 Hannover		Drawing Number: 040-NF-PIT-137433		A3								
				Material: S235JRG2		Sheet 2 of 2								